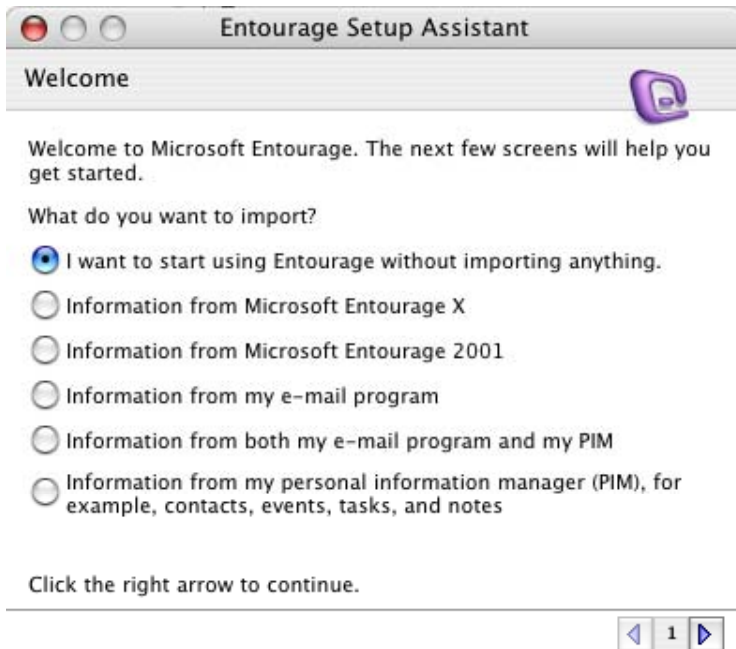


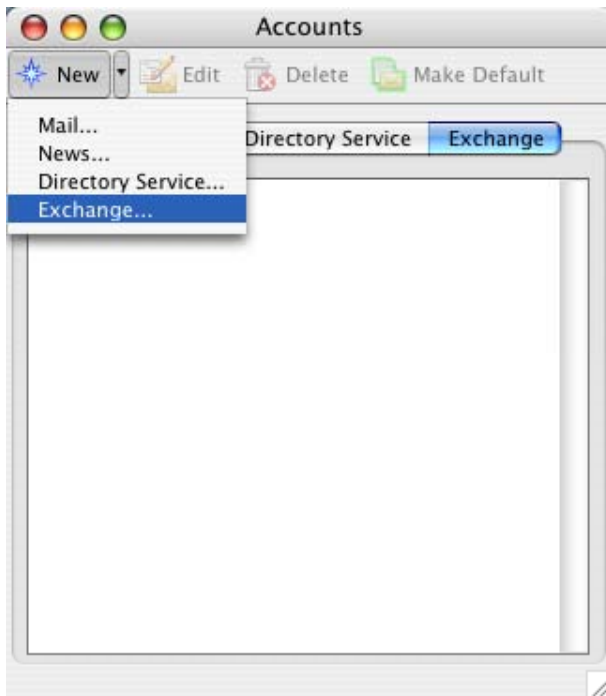
Entourage 2004 Setup with Exchange 2003

If Entourage has not been setup before you will see this screen.

-Close the screen and go the next step

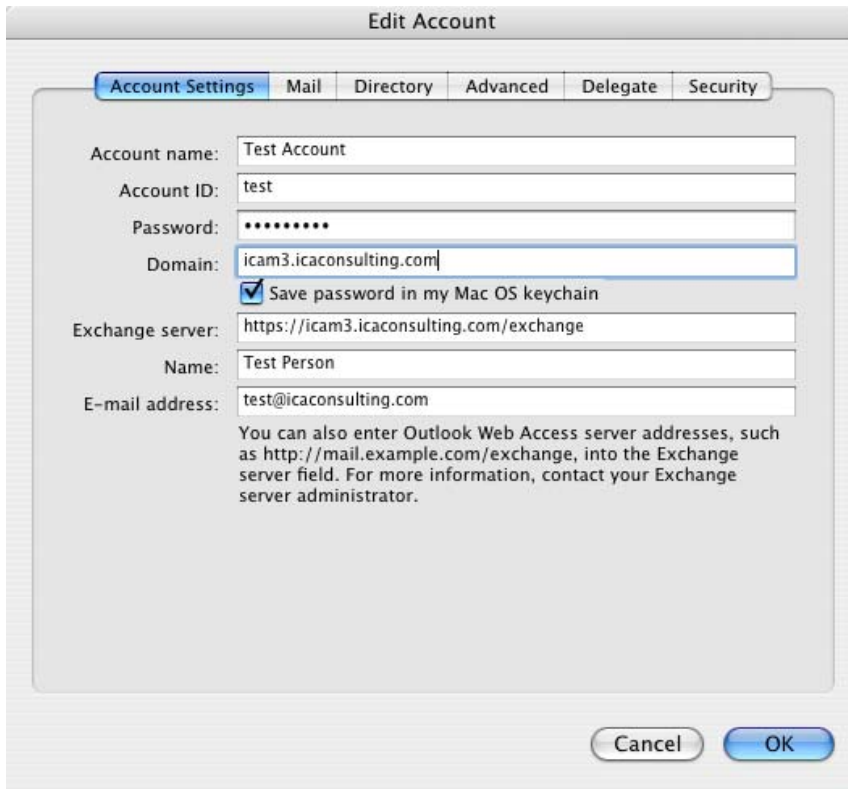


Go to the Tools Menu then choose Accounts

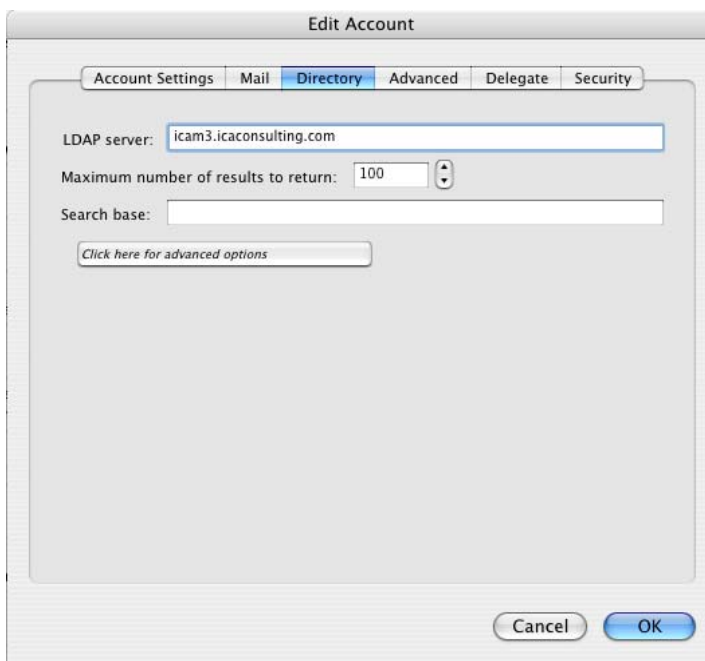


Choose 'Configure Account Manually'

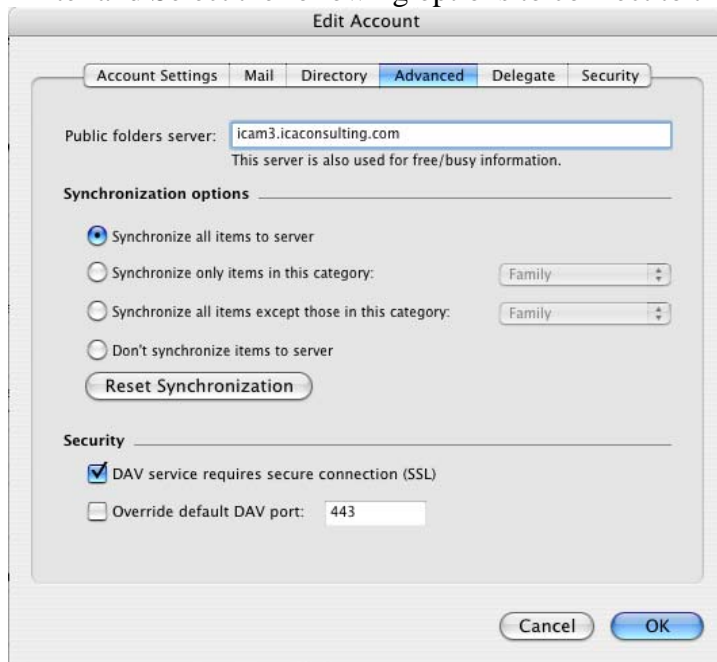
Fill in the fields below with your own username and password.
The Account Name is just a name you want to use to save these setting under



-Enter the following to connect to the LDAP server

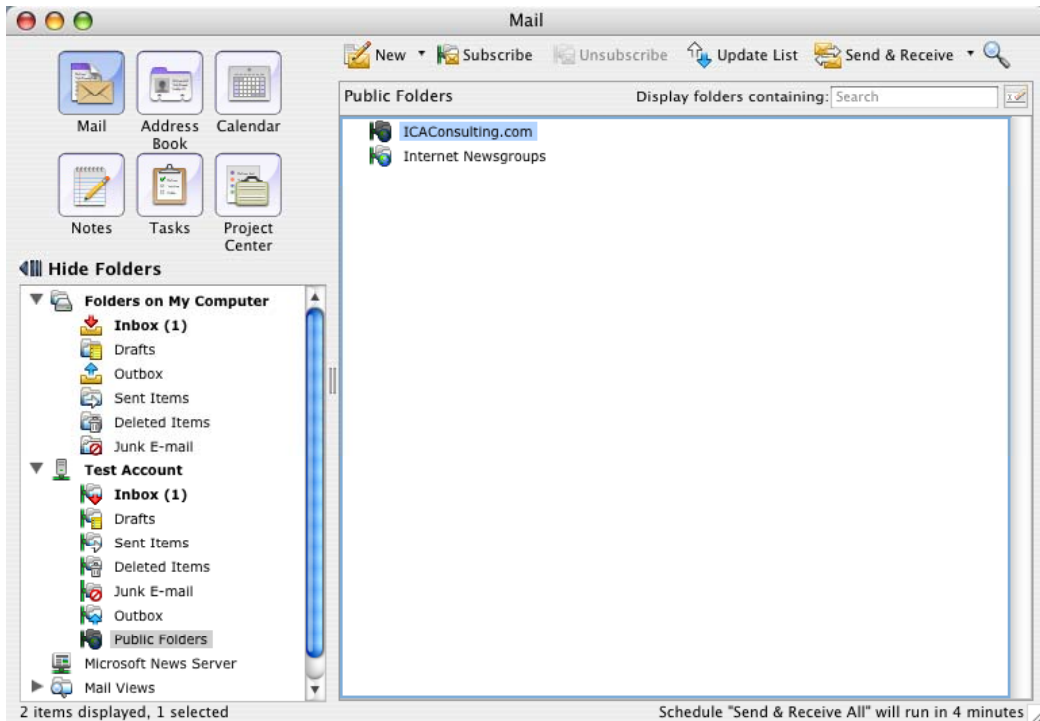


-Enter and Select the following options to connect to the Public Folders



-Choose the Public Folders item under the Exchange list

-Highlight the Personal folder item in the right pane and choose 'Subscribe' from the top menu



Download the following Certificate:

-www.icaconsulting.com/Downloads/Entourage/exchange1.icam3.icaconsulting.com.crt

-Double Click the file and add the certificate to your login Keychain



Download the following Certificate:

-www.icaconsulting.com/Downloads/Entourage/exchange1.cer

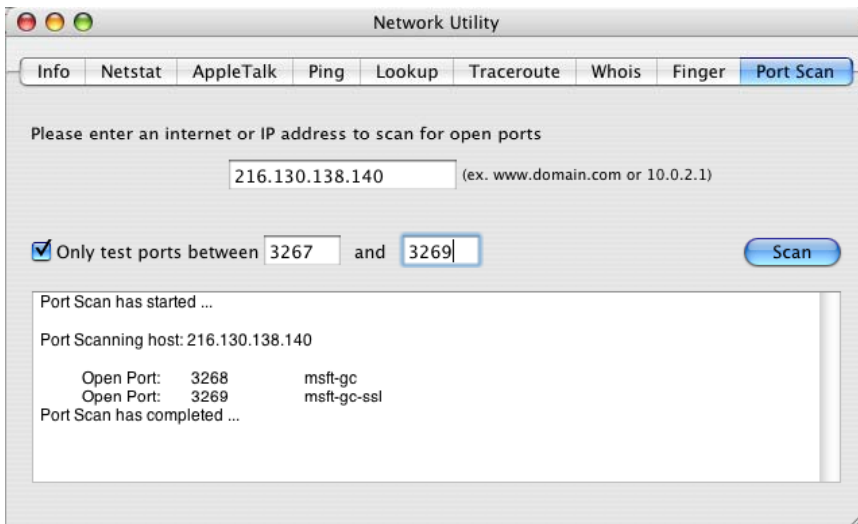
-Double Click the file and add the certificate to the X509 Anchors Keychain



-----Troubleshooting-----

-If Entourage will not connect to the server, using the network utility, scan ports between 3267 and 3269

They should respond as below:



-Other possible problems could be incorrect Username or Password